

Using the Sharp TVs

This lesson shows how to use the Sharp 70" TVs using the wall plate controllers.

Step 1 - Turn on the TV and Speakers



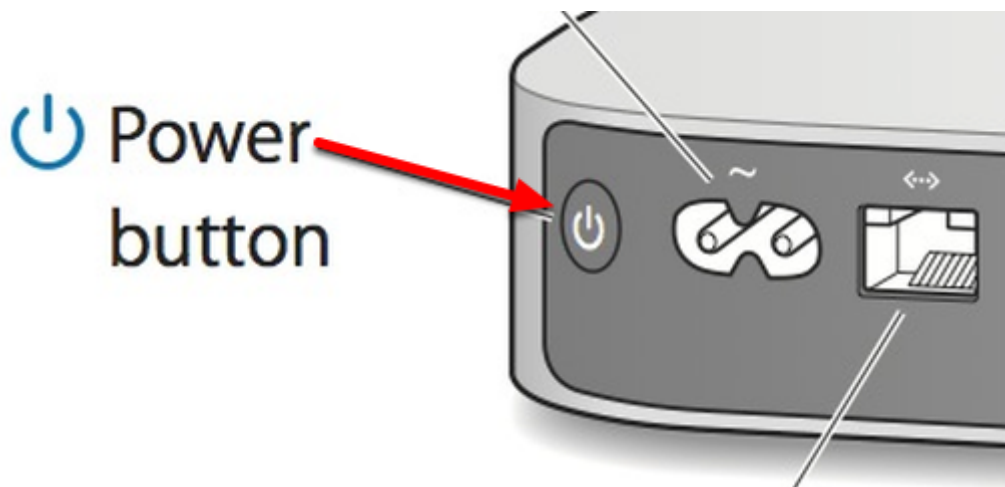
To turn on the TV, ceiling-mounted speakers, and use the Mac Mini as the video source press the "Mac Mini" button on the wall plate near the TV. If you do not use the wall plate controller to turn on the TV, the amplifier controlling the speakers will not be turned on either and there will be NO SOUND!

Step 2a - Ensure Mac Mini is Turned On



Next, ensure that the Mac Mini is turned on. There will be a white LED lit on the front of the Mac Mini if it is on (it may be slowly flashing if Mac is asleep).

Step 2b Turn On Mac Mini (if turned off)



If the Mac Mini is powered off, turn it on using the Power button on the back panel (see above).

Step 3 - Wake up the Mac Mini (if asleep)



Press the “Esc” key on the Logitech keyboard to wake up the Mac Mini. You should now see the Mac Mini login screen or desktop on the IWB screen.

Step 4 - Login to Mac Mini



Next, login to the Mac Mini connected to the TV using the Logitech keyboard. The Username for the Mac Mini will always be the Room # (e.g. A4, P1, S6) and all TV / IWB accounts use the same password (see the ICT Department for details).

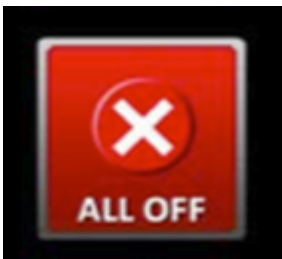
NOTE: It is **very** important that password security is taken seriously by all staff. Be **extremely careful** that students do not see or overhear passwords to College systems, including the IWBs.

Step 5 - Set the Volume



To change the volume on the TV, first use the audio up and down buttons on the keyboard. Then, if required use the Volume + and - controls on the wall plate to reduce or increase the sound further. You can hold the buttons down to increase or decrease the volume.

Step 6 - Turn the TV and Sound Off When Finished



After the end of each lesson, **please turn off the TV** and sound by pressing the "**ALL OFF**" button on the wall controller. This saves energy, extends the life of the TVs, and ensures there is no humming or buzzing in the speakers when the TV is not being used.

Using Optional Inputs (Apple TV, VGA, HDMI)



In some locations, additional inputs may be provided to send to the TV such as VGA or HDMI from a laptop, or the "Mac Mini" button may be replaced with an "Apple TV" button. In all cases, merely push the button of the option you want to use and the TV source will be switched as indicated.

NOTE: If there is an Apple TV connected to a TV in addition to the Mac Mini, the second input labelled either "Apple TV" or "HDMI" will be used to switch to the Apple TV.